

Universal Education



Features

With a choice of 3 board specifications to choose from and with solid aluminium hardware, Universal Education is a cubicle for all but the harshest environments and budgets.

A wide selection of colours can be chosen for the doors, partitions and pilasters with a matching or contrasting 2mm pvc edge protecting the more delicate edges.

Materials

- 19mm moisture resistant melamine faced chipboard
- High pressure laminate on 17mm moisture resistant chipboard
- 12mm Compact laminate
- Satin anodised aluminium hardware

Safety

- Emergency release locks
- High strength boards and fittings
- Doors lift off in case of severe emergency



Service



Free site survey, design and quotation service



Specification Service



Full Installation Service

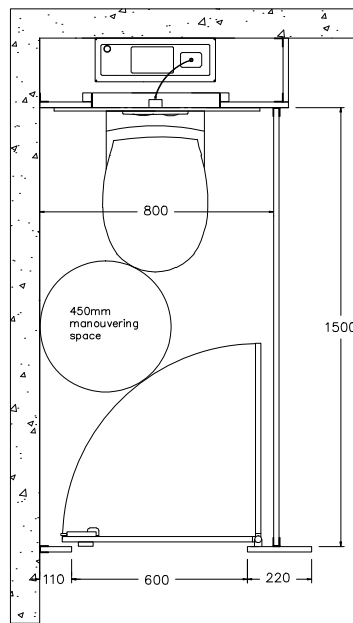
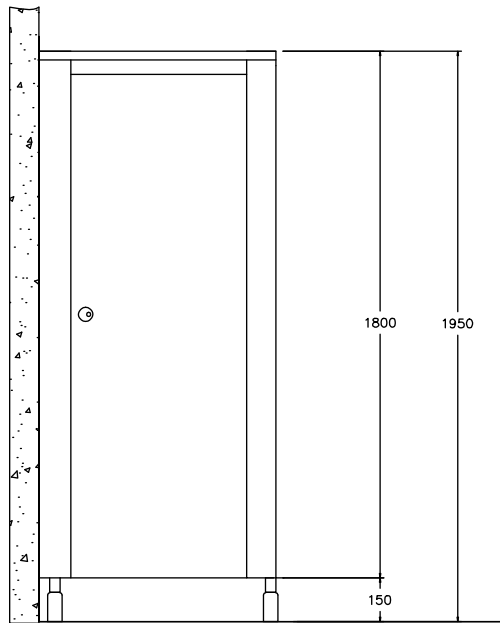


3yr Warranty

designed, supplied and/ or installed

...beautiful cubicles ...beautiful washrooms

Technical Specification



Cubicle Sizes

Ideal sizes, making best use of materials and to provide sufficient space, are 1500mm deep x 800mm wide. However, all necessary sizes can be accommodated.

1950mm overall height including 150mm floor clearance.

450mm diameter manoeuvring space essential within Building regulations.

For guidance on Building regulations, DDA requirements, and the provision of ambulant and enlarged cubicles, please refer to our website - www.iglooswashrooms.com

NBS for NBS specifications please refer to our sales team.

Fittings



Indicator Bolt

- Building Regulations / DDA compliant
- Strong aluminium construction
- External emergency release
- Red / white indicators



Pedestal

- Strong aluminium construction
- Anti tamper through fixings
- 150mm clearance +/- 15mm



Cleat

- Pressed aluminium construction
- Anti tamper through fixings
- Caters for out of line walls



Hinges

- Strong aluminium construction
- Anti tamper through fixings
- Adjustable for door to fall close / open



Coat Hook

- 35mm projection
- With integral buffer
- Supplied with anti tamper fixings



Headrail

- 38 x 22 x 3mm L section aluminium extrusion or
- 47 x 19 x 3mm U section for 12mm Compact

IGLOOS Washrooms, Unit 16, North Staffordshire Business Park, Innovation Way, Stoke-on-Trent, ST6 4BF

+44 (0) 1782 828050 ✉ design@iglooswashrooms.com 🌐 www.iglooswashrooms.com

All details are correct at time of print. IGLOOS Washrooms reserve the right to change or alter specifications without notice